

DESIGNED & DIMENSIONED  
IN MILLIMETERS [INCHES]

NOTES:

- CONNECTOR ENVELOPE DIMENSIONS. OTHER COMPONENTS PLACED ON PCB SHALL AVOID THIS ZONE.
- THESE PLATED THROUGH HOLES AND STENCIL APERTURES NOT REQUIRED FOR **ERM8-010-09.0-X-DV-EGPS**.

| TABLE 1  |               |               |               |
|----------|---------------|---------------|---------------|
| POSITION | "A"           | "B"           | "C"           |
| -005     | 3.20 [.126]   | 6.80 [.268]   | 10.00 [.394]  |
| -010     | 7.20 [.283]   | 10.80 [.425]  | 14.00 [.551]  |
| -011     | 8.00 [.315]   | 11.60 [.457]  | 14.80 [.583]  |
| -013     | 9.60 [.378]   | 13.20 [.520]  | 16.40 [.646]  |
| -020     | 15.20 [.598]  | 18.80 [.740]  | 22.00 [.866]  |
| -025     | 19.20 [.756]  | 22.80 [.898]  | 26.00 [1.024] |
| -030     | 23.20 [.913]  | 26.80 [1.055] | 30.00 [1.181] |
| -035     | 27.20 [1.071] | 30.80 [1.213] | 34.00 [1.339] |
| -040     | 31.20 [1.228] | 34.80 [1.370] | 38.00 [1.496] |
| -049     | 38.40 [1.512] | 42.00 [1.654] | 45.20 [1.780] |
| -050     | 39.20 [1.543] | 42.80 [1.685] | 46.00 [1.811] |
| -060     | 47.20 [1.858] | 50.80 [2.000] | 54.00 [2.126] |
| -070     | 55.20 [2.173] | 58.80 [2.315] | 62.00 [2.441] |
| -075     | 59.20 [2.331] | 62.80 [2.472] | 66.00 [2.598] |
| -100     | 79.20 [3.118] | 82.80 [3.260] | 86.00 [3.386] |

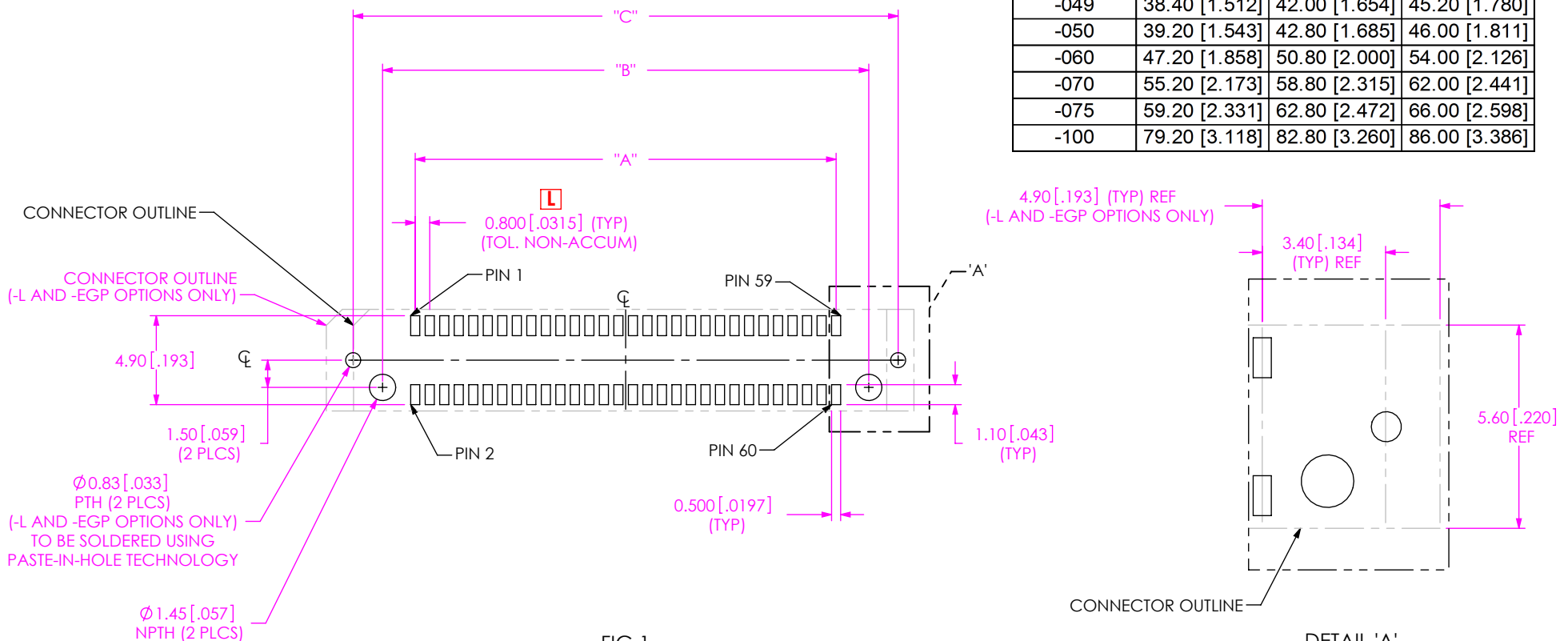


FIG 1  
ALL OPTIONS EXCEPT - EGPS  
(-030 POSITION SHOWN)  
(ALL DIMENSIONS ARE SYMMETRIC ABOUT THE CENTERLINE)

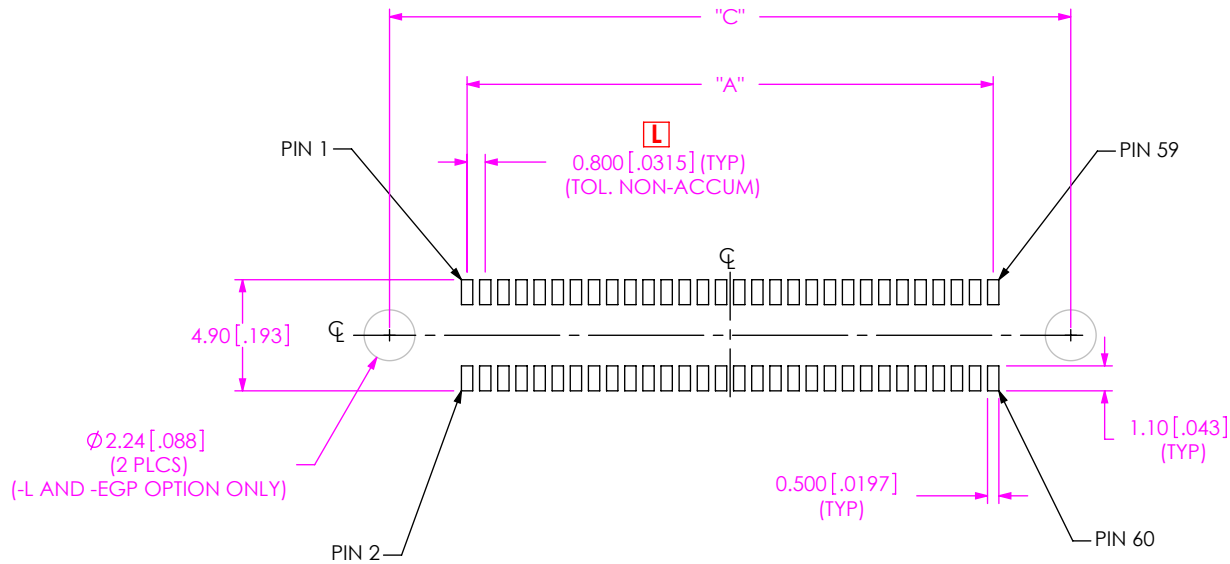
**PROPRIETARY NOTE**  
THIS DOCUMENT CONTAINS CONFIDENTIAL AND PROPRIETARY INFORMATION AND ALL DESIGN, MANUFACTURING, REPRODUCTION, USE, PATENT RIGHTS AND SALES RIGHTS ARE EXPRESSLY RESERVED BY SAMTEC, INC. THIS DOCUMENT SHALL NOT BE DISCLOSED, IN WHOLE OR PART, TO ANY UNAUTHORIZED PERSON OR ENTITY NOR REPRODUCED, TRANSFERRED OR INCORPORATED IN ANY OTHER PROJECT IN ANY MANNER WITHOUT THE EXPRESS WRITTEN CONSENT OF SAMTEC, INC.

**samtec**

520 PARK EAST BLVD., NEW ALBANY, IN 47150  
PHONE: 812-944-6733 FAX: 812-948-5047  
e-Mail: info@SAMTEC.com code: 55322

DESIGNED & DIMENSIONED  
IN MILLIMETERS [INCHES]

NOTE:  
STENCIL TO BE 0.15 [ .006 ] THICK.



| TABLE 2  |               |               |
|----------|---------------|---------------|
| POSITION | "A"           | "C"           |
| -005     | 3.20 [.126]   | 10.00 [.394]  |
| -010     | 7.20 [.283]   | 14.00 [.551]  |
| -011     | 8.00 [.315]   | 14.80 [.583]  |
| -013     | 9.60 [.378]   | 16.40 [.646]  |
| -020     | 15.20 [.598]  | 22.00 [.866]  |
| -025     | 19.20 [.756]  | 26.00 [1.024] |
| -030     | 23.20 [.913]  | 30.00 [1.181] |
| -035     | 27.20 [1.081] | 34.00 [1.339] |
| -040     | 31.20 [1.228] | 38.00 [1.496] |
| -049     | 38.40 [1.512] | 45.20 [1.780] |
| -050     | 39.20 [1.543] | 46.00 [1.811] |
| -060     | 47.20 [1.858] | 54.00 [2.126] |
| -070     | 55.20 [2.173] | 62.00 [2.441] |
| -075     | 59.20 [2.331] | 66.00 [2.598] |
| -100     | 79.20 [3.118] | 86.00 [3.386] |

FIG 2  
(-030 POSITION SHOWN)  
(ALL DIMENSIONS ARE SYMMETRIC ABOUT THE CENTERLINE)

**PROPRIETARY NOTE**  
THIS DOCUMENT CONTAINS CONFIDENTIAL AND PROPRIETARY INFORMATION AND ALL DESIGN, MANUFACTURING, REPRODUCTION, USE, PATENT RIGHTS AND SALES RIGHTS ARE EXPRESSLY RESERVED BY SAMTEC, INC. THIS DOCUMENT SHALL NOT BE DISCLOSED, IN WHOLE OR PART, TO ANY UNAUTHORIZED PERSON OR ENTITY NOR REPRODUCED, TRANSFERRED OR INCORPORATED IN ANY OTHER PROJECT IN ANY MANNER WITHOUT THE EXPRESS WRITTEN CONSENT OF SAMTEC, INC.

**samtec**  
520 PARK EAST BLVD, NEW ALBANY, IN 47150  
PHONE: 812-944-6733 FAX: 812-948-5047  
e-Mail: info@SAMTEC.com code: 55322

| No. OF POS. | "D"   |         | "E"   |         |
|-------------|-------|---------|-------|---------|
| -10         | 18.00 | [0.709] | 16.36 | [0.644] |
| -20         | 26.00 | [1.024] | 24.36 | [0.959] |
| -25         | 30.00 | [1.181] | 28.36 | [1.117] |
| -30         | 34.00 | [1.339] | 32.36 | [1.274] |

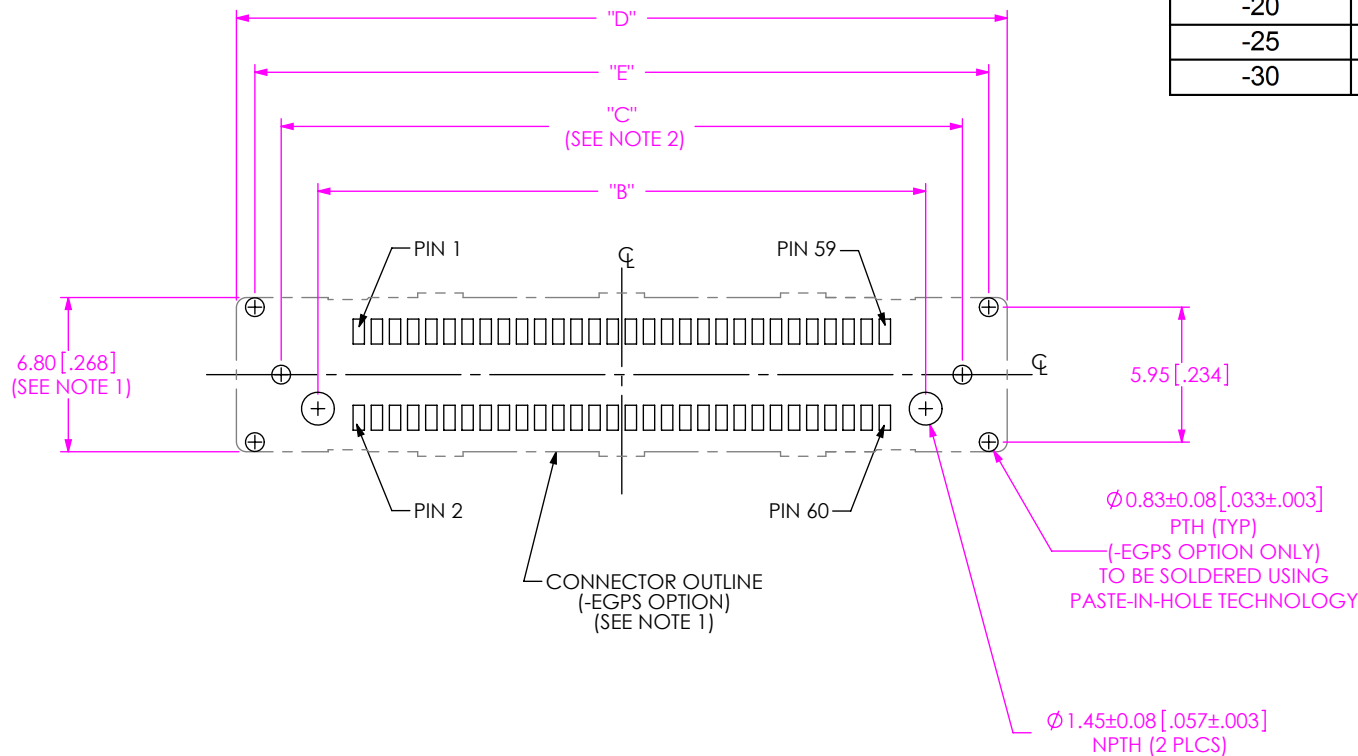


FIG 3  
 -EGPS AND -S OPTION  
 (-030 POSITION SHOWN)  
 (SAME AS FIG 1, EXCEPT AS SHOWN)  
 (ALL DIMENSIONS ARE SYMMETRIC ABOUT THE CENTERLINE)

**PROPRIETARY NOTE**  
 THIS DOCUMENT CONTAINS CONFIDENTIAL AND PROPRIETARY INFORMATION AND ALL DESIGN, MANUFACTURING, REPRODUCTION, USE, PATENT RIGHTS AND SALES RIGHTS ARE EXPRESSLY RESERVED BY SAMTEC, INC. THIS DOCUMENT SHALL NOT BE DISCLOSED, IN WHOLE OR IN PART, TO ANY UNAUTHORIZED PERSON OR ENTITY NOR REPRODUCED, TRANSFERRED OR INCORPORATED IN ANY OTHER PROJECT IN ANY MANNER WITHOUT THE EXPRESS WRITTEN CONSENT OF SAMTEC, INC.



520 PARK EAST BLVD., NEW ALBANY, IN 47150  
 PHONE: 812-944-6733 FAX: 812-948-5047  
 e-Mail: info@SAMTEC.com code: 55322

NOTE:  
STENCIL TO BE 0.15[.006] THICK.

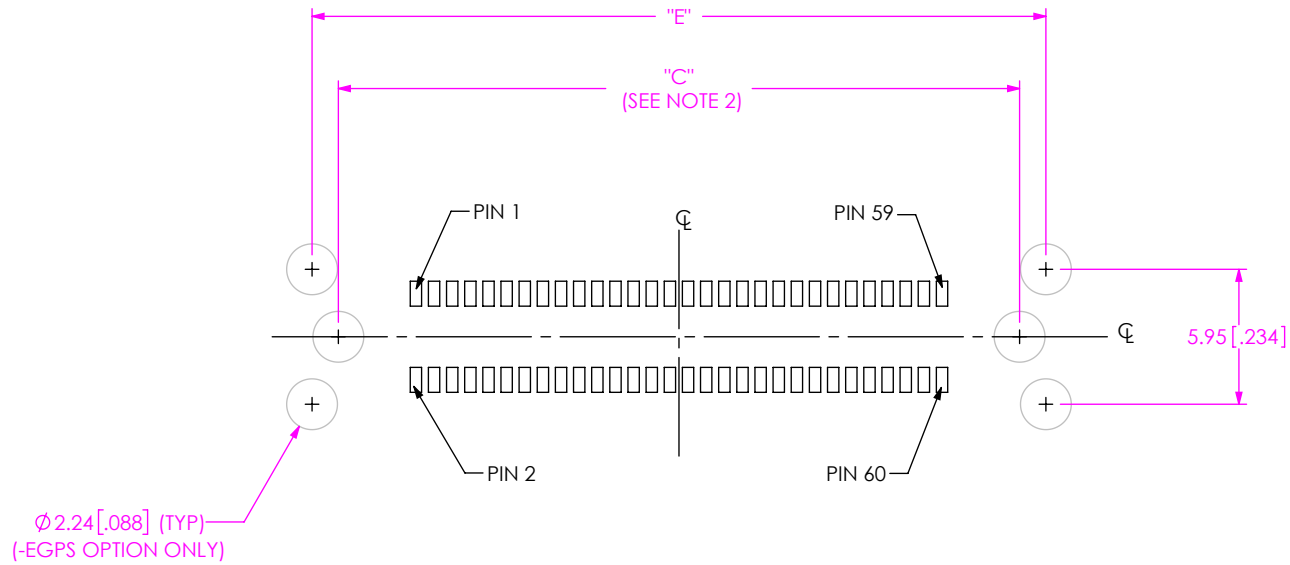


FIG 4  
-EGPS AND -S OPTION  
(-030 POSITION SHOWN)  
(SAME AS FIG 2, EXCEPT AS SHOWN)  
(ALL DIMENSIONS ARE SYMMETRIC ABOUT THE CENTERLINE)

**PROPRIETARY NOTE**  
THIS DOCUMENT CONTAINS CONFIDENTIAL AND PROPRIETARY INFORMATION AND ALL DESIGN, MANUFACTURING, REPRODUCTION, USE, PATENT RIGHTS AND SALES RIGHTS ARE EXPRESSLY RESERVED BY SAMTEC, INC. THIS DOCUMENT SHALL NOT BE DISCLOSED, IN WHOLE OR PART, TO ANY UNAUTHORIZED PERSON OR ENTITY NOR REPRODUCED, TRANSFERRED OR INCORPORATED IN ANY OTHER PROJECT IN ANY MANNER WITHOUT THE EXPRESS WRITTEN CONSENT OF SAMTEC, INC.



520 PARK EAST BLVD, NEW ALBANY, IN 47150  
PHONE: 812-944-6733 FAX: 812-948-5047  
e-Mail: info@SAMTEC.com code: 55322