

Ceramic

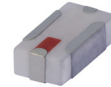
Bandpass Filter

BFCN-5200+

50Ω 4250 to 6300 MHz

The Big Deal

- LTCC construction
- Temperature stable from -55 to +100°C
- Small size (0.126 x .063 X .037")



CASE STYLE: FV1206-4

Product Overview

The BFCN-5200+ LTCC bandpass filter covers the 4250 to 6300 MHz passband with 1.8 dB passband insertion loss, 23 dB lower stopband rejection, and 21 dB upper stopband rejection. This model handles up to 2.5W RF input power and provides a wide operating temperature range from -55 to +100°C. Utilizing LTCC multi-layer construction, the filter achieves excellent repeatability of performance and comes in a tiny 1206 ceramic package with wraparound terminations, minimizing performance variations due to parasitics and saving space in dense PCB layouts.

Key Features

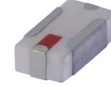
Feature	Advantages
LTCC Construction	Provides a rugged package well suited for tough environments such as high humidity and temperature extremes.
Tiny size (0.126 x .063 x .037")	Saves space in dense circuit boards and minimizes the effects of parasitics.
Wrap-around terminations	Provides excellent solderability and easy visual inspection
Wide operating temperature range, -55 to +100°C	Enables reliable performance in extreme environments



Ceramic Bandpass Filter

50Ω 4250 to 6300 MHz

BFCN-5200+



Generic photo used for illustration purposes only

CASE STYLE: FV1206-4

Features

- Small size(0.126 x .063 x .037)
- Temperature stable
- LTCC construction

Applications

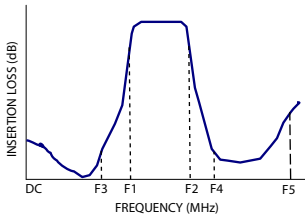
- Harmonic rejection
- Transmitters / Receivers

+RoHS Compliant
The +Suffix identifies RoHS Compliance. See our web site for RoHS Compliance methodologies and qualifications

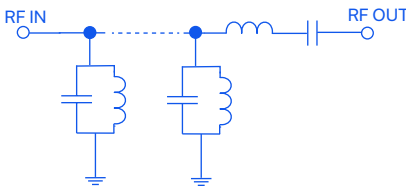
Available Tape and Reel at no extra cost

Reel Size	Devices/Reel
7"	20, 50, 100, 200, 500, 1000, 3000

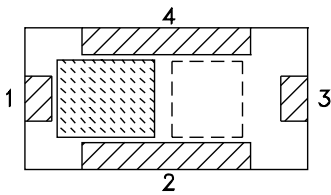
Specification Definition



Functional Schematic



Top View



Pad Connections

Input	1
Output	3
Ground	2,4

Electrical Specifications^{1,2} at 25°C

Parameter	F#	Frequency (MHz)	Min.	Typ.	Max.	Unit
Pass Band	Center Frequency	—	—	5200	—	MHz
	Insertion Loss	F1 - F2	4250 - 6300	—	1.8	dB
	VSWR	F1 - F2	4250 - 6300	—	2.3	:1
Stop Band, Lower	Insertion Loss	DC - F3	3300	15	23	dB
	VSWR	DC - F3	3300	—	23	:1
Stop Band, Upper	Insertion Loss	F4 - F5	7500 - 9000	10	21	dB
	VSWR	F4 - F5	7500 - 9000	—	16	:1

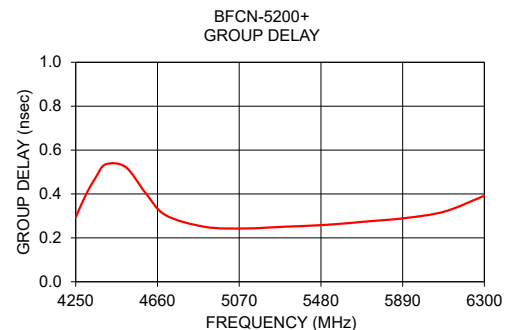
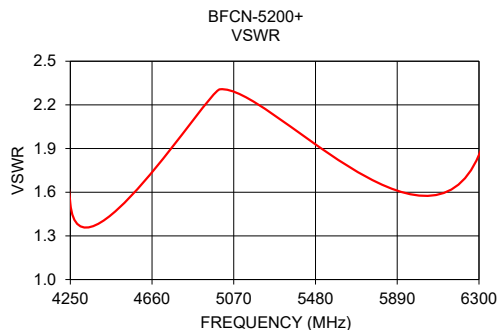
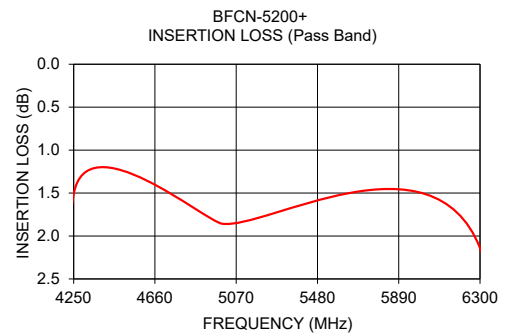
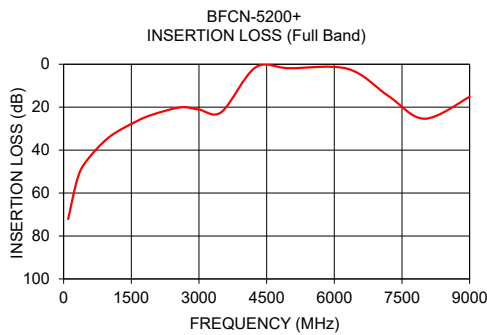
1. Measured on Mini-Circuits Characterization Test Board TB-824+.

2. This filter is not intended for use as a DC Blocking circuit element. In Application where DC voltage is present at either input or output ports, blocking capacitors are required at the corresponding RF port.

Maximum Ratings

Operating Temperature	-55°C to +100°C
Storage Temperature	-55°C to +100°C
RF Power Input*	2.5 W at 25°C

*Passband rating, derate linearly to 0.7 W at 100°C ambient
Permanent damage may occur if any of these limits are exceeded.



Full Band Performance

Pass Band Performance

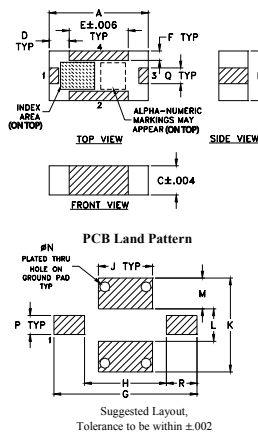
Frequency (MHz)	Insertion Loss (dB)	VSWR (:1)	Frequency (MHz)	Insertion Loss (dB)	Group Delay (nsec)
100	72.07	130.26	4250	1.52	0.29
300	53.80	99.00	4300	1.45	0.40
500	45.22	82.81	4350	1.44	0.48
1000	34.09	67.56	4400	1.47	0.54
1600	26.73	59.04	4500	1.56	0.52
2000	23.26	53.49	4600	1.66	0.41
2600	20.06	44.34	4700	1.75	0.30
3000	21.09	37.90	4900	1.85	0.25
3500	22.24	23.85	5100	1.84	0.24
4250	1.52	1.52	5300	1.81	0.25
5000	1.86	2.31	5500	1.79	0.26
6300	2.14	1.86	5700	1.83	0.27
7200	14.79	9.49	5900	1.90	0.29
8000	25.38	23.09	6100	1.98	0.32
9000	15.15	18.38	6300	2.14	0.39

Pad Connections

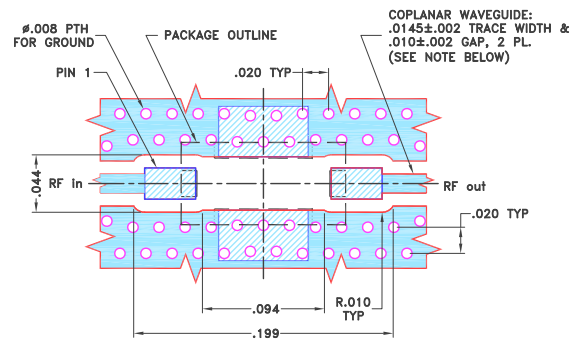
Input	1
Output	3
Ground	2,4

Product Marking: GC

Outline Drawing



Demo Board MCL P/N: TB-824+ Suggested PCB Layout (PL-454)



NOTES:

- TRACE WIDTH PARAMETERS ARE SHOWN FOR ROGERS R04350B WITH DIELECTRIC THICKNESS .0066"±.0007". COPPER: 1/2 OZ. EACH SIDE. FOR OTHER MATERIALS TRACE WIDTH AND GAP MAY NEED TO BE MODIFIED.
- BOTTOM SIDE OF THE PCB IS CONTINUOUS GROUND PLANE.

- DENOTES PCB COPPER LAYOUT WITH SMOBC (SOLDER MASK OVER BARE COPPER).
- DENOTES COPPER LAND PATTERN FREE OF SOLDER MASK.

Outline Dimensions (inch mm)

A	B	C	D	E	F	G	H	J	wt
.126	.063	.037	.026	.075	.012	.182	.104	.069	
3.20	1.60	0.94	0.66	1.91	0.30	4.62	2.64	1.75	
K	L	M	N	P	Q	R			grams
.119	.041	.039	.013	.024	.020	.039			.020
3.02	1.04	0.99	0.33	0.61	0.51	0.99			

Additional Notes

- Performance and quality attributes and conditions not expressly stated in this specification document are intended to be excluded and do not form a part of this specification document.
- Electrical specifications and performance data contained in this specification document are based on Mini-Circuit's applicable established test performance criteria and measurement instructions.
- The parts covered by this specification document are subject to Mini-Circuits standard limited warranty and terms and conditions (collectively, "Standard Terms"); Purchasers of this part are entitled to the rights and benefits contained therein. For a full statement of the Standard Terms and the exclusive rights and remedies thereunder, please visit Mini-Circuits' website at www.minicircuits.com/MCLStore/terms.jsp