

# ON Semiconductor

## Is Now

# onsemi™

To learn more about onsemi™, please visit our website at  
[www.onsemi.com](http://www.onsemi.com)

---

**onsemi** and **onsemi** and other names, marks, and brands are registered and/or common law trademarks of Semiconductor Components Industries, LLC dba "**onsemi**" or its affiliates and/or subsidiaries in the United States and/or other countries. **onsemi** owns the rights to a number of patents, trademarks, copyrights, trade secrets, and other intellectual property. A listing of **onsemi** product/patent coverage may be accessed at [www.onsemi.com/site/pdf/Patent-Marking.pdf](http://www.onsemi.com/site/pdf/Patent-Marking.pdf). **onsemi** reserves the right to make changes at any time to any products or information herein, without notice. The information herein is provided "as-is" and **onsemi** makes no warranty, representation or guarantee regarding the accuracy of the information, product features, availability, functionality, or suitability of its products for any particular purpose, nor does **onsemi** assume any liability arising out of the application or use of any product or circuit, and specifically disclaims any and all liability, including without limitation special, consequential or incidental damages. Buyer is responsible for its products and applications using **onsemi** products, including compliance with all laws, regulations and safety requirements or standards, regardless of any support or applications information provided by **onsemi**. "Typical" parameters which may be provided in **onsemi** data sheets and/or specifications can and do vary in different applications and actual performance may vary over time. All operating parameters, including "Typicals" must be validated for each customer application by customer's technical experts. **onsemi** does not convey any license under any of its intellectual property rights nor the rights of others. **onsemi** products are not designed, intended, or authorized for use as a critical component in life support systems or any FDA Class 3 medical devices or medical devices with a same or similar classification in a foreign jurisdiction or any devices intended for implantation in the human body. Should Buyer purchase or use **onsemi** products for any such unintended or unauthorized application, Buyer shall indemnify and hold **onsemi** and its officers, employees, subsidiaries, affiliates, and distributors harmless against all claims, costs, damages, and expenses, and reasonable attorney fees arising out of, directly or indirectly, any claim of personal injury or death associated with such unintended or unauthorized use, even if such claim alleges that **onsemi** was negligent regarding the design or manufacture of the part. **onsemi** is an Equal Opportunity/Affirmative Action Employer. This literature is subject to all applicable copyright laws and is not for resale in any manner. Other names and brands may be claimed as the property of others.

# CM1215

## 1, 2 and 4-Channel Low Capacitance ESD Arrays

### Product Description

The CM1215 family of diode arrays provides ESD protection for electronic components or sub-systems requiring minimal capacitive loading. These devices are ideal for protecting systems with high data and clock rates or for circuits requiring low capacitive loading. Each ESD channel consists of a pair of diodes in series which steer the positive or negative ESD current pulse to either the positive (VP) or negative (VN) supply rail. The CM1215 protects against ESD pulses up to  $\pm 15$  kV per the IEC 61000-4-2 standard.

This device is particularly well-suited for protecting systems using high-speed ports such as USB2.0, IEEE1394 (Firewire<sup>®</sup>, iLink<sup>™</sup>), Serial ATA, DVI, HDMI and corresponding ports in removable storage, digital camcorders, DVD-RW drives and other applications where extremely low loading capacitance with ESD protection are required in a small package footprint.

### Features

- One, two, and four channels of ESD Protection
- Provides  $\pm 15$  kV ESD Protection on Each Channel Per the IEC 61000-4-2 ESD Requirements
- Channel Loading Capacitance of 1.6 pF Typical
- Channel I/O to GND Capacitance Difference of 0.04 pF Typical
- Mutual Capacitance of 0.13 pF Typical
- Minimal Capacitance Change with Temperature and Voltage
- Each I/O Pin Can Withstand Over 1000 ESD Strikes
- SOT Packages
- These Devices are Pb-Free and are RoHS Compliant

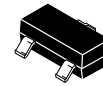
### Applications

- IEEE1394 Firewire<sup>®</sup> Ports at 400 Mbps / 800 Mbps
- DVI Ports, HDMI Ports in Notebooks, Set Top Boxes, Digital TVs, LCD Displays
- Serial ATA Ports in Desktop PCs and Hard Disk Drives
- PCI Express Ports
- General Purpose High-Speed Data Line ESD Protection

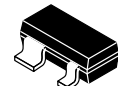


**ON Semiconductor<sup>®</sup>**

<http://onsemi.com>



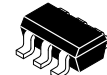
**SOT23-3  
SO SUFFIX  
CASE 419AH**



**SOT143  
SR SUFFIX  
CASE 527AF**

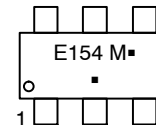
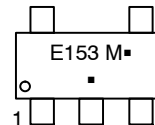
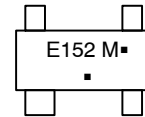
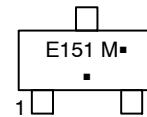


**SOT23-5  
SO SUFFIX  
CASE 527AH**



**SOT23-6  
SO SUFFIX  
CASE 527AJ**

### MARKING DIAGRAM



XXXX = Specific Device Code  
 M = Date Code  
 ■ = Pb-Free Package  
 (Note: Microdot may be in either location)

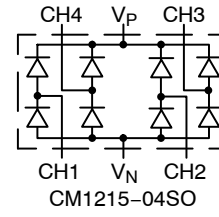
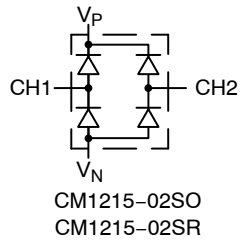
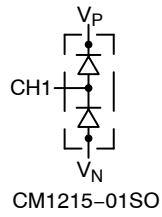
### ORDERING INFORMATION

| Device      | Package              | Shipping <sup>†</sup> |
|-------------|----------------------|-----------------------|
| CM1215-01SO | SOT23-3<br>(Pb-Free) | 3000/Tape & Reel      |
| CM1215-02SR | SOT143<br>(Pb-Free)  | 3000/Tape & Reel      |
| CM1215-02SO | SOT23-5<br>(Pb-Free) | 3000/Tape & Reel      |
| CM1215-04SO | SOT23-6<br>(Pb-Free) | 3000/Tape & Reel      |

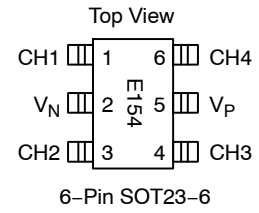
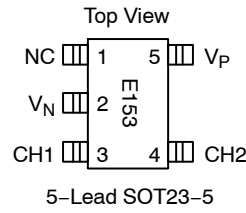
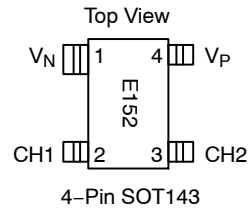
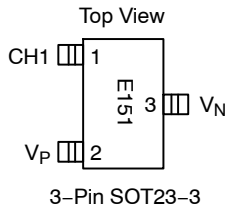
<sup>†</sup>For information on tape and reel specifications, including part orientation and tape sizes, please refer to our Tape and Reel Packaging Specification Brochure, BRD8011/D.

# CM1215

## BLOCK DIAGRAM



## PACKAGE / PINOUT DIAGRAMS



**Table 1. PACKAGE PIN DESCRIPTIONS**

| Pin Name       | SOT23-3 | SOT143  | SOT23-5 | SOT23-6 | Type | Description                  |
|----------------|---------|---------|---------|---------|------|------------------------------|
|                | Pin No. | Pin No. | Pin No. | Pin No. |      |                              |
| CH1            | 1       | 2       | 3       | 1       | I/O  | ESD Channel                  |
| V <sub>N</sub> | 3       | 1       | 2       | 2       | GND  | Negative voltage supply rail |
| CH2            | -       | 3       | 4       | 3       | I/O  | ESD Channel                  |
| CH3            | -       | -       | -       | 4       | I/O  | ESD Channel                  |
| V <sub>P</sub> | 2       | 4       | 5       | 5       | PWR  | Positive voltage supply rail |
| CH4            | -       | -       | -       | 6       | I/O  | ESD Channel                  |
| N/C            | -       | -       | 1       | -       | -    | No Connection                |

# CM1215

## SPECIFICATIONS

**Table 2. ABSOLUTE MAXIMUM RATINGS**

| Parameter                              | Rating                     | Units |
|--|----------------------------|-------|
| Operating Supply Voltage ( $V_P-V_N$ ) | 6                          | V     |
| Diode Forward DC Current (Note 1)      | 20                         | mA    |
| DC Voltage at any Channel Input        | $(V_N-0.5)$ to $(V_P+0.5)$ | V     |
| Operating Temperature Range            |                            |       |
| Ambient                                | -40 to +85                 | °C    |
| Junction                               | -40 to +125                | °C    |
| Storage Temperature Range              | -40 to +150                | °C    |

Stresses exceeding Maximum Ratings may damage the device. Maximum Ratings are stress ratings only. Functional operation above the Recommended Operating Conditions is not implied. Extended exposure to stresses above the Recommended Operating Conditions may affect device reliability.

**Table 3. STANDARD OPERATING CONDITIONS**

| Parameter                     | Rating     | Units |
|-------------------------------|------------|-------|
| Operating Temperature Range   | -40 to +85 | °C    |
| Package Power Rating          |            | mW    |
| SOT23-3 Package (CM1215-01SO) | 225        |       |
| SOT143 Package (CM1215-02SR)  | 225        |       |
| SOT23-5 Package (CM1215-02SO) | 225        |       |
| SOT23-6 Package (CM1215-04SO) | 225        |       |

**Table 4. ELECTRICAL OPERATING CHARACTERISTICS** (Note 1)

| Symbol          | Parameter  | Conditions   | Min        | Typ                    | Max          | Unit |
|-----------------|--|--|------------|------------------------|--------------|------|
| $V_P$           | Operating Supply Voltage ( $V_P-V_N$ )   |  |            | 3.3                    | 5.5          | V    |
| $I_P$           | Operating Supply Current   | $(V_P-V_N) = 3.3$ V  |            |                        | 8            | μA   |
| $V_F$           | Diode Forward Voltage<br>Top Diode<br>Bottom Diode   | $I_F = 20$ mA; $T_A = 25^\circ\text{C}$                        | 0.6<br>0.6 | 0.8<br>0.8             | 0.95<br>0.95 | V    |
| $I_{LEAK}$      | Channel Leakage Current  | $T_A = 25^\circ\text{C}$ ; $V_P = 5$ V, $V_N = 0$ V            |            | ±0.1                   | ±1.0         | μA   |
| $C_{IN}$        | Channel Input Capacitance  | At 1 MHz, $V_P = 3.3$ V,<br>$V_N = 0$ V, $V_{IN} = 1.65$ V;    |            | 1.6                    | 2.0          | pF   |
| $\Delta C_{IN}$ | Channel I/O to GND Capacitance Difference  |  |            | 0.04                   |              | pF   |
| $C_{MUTUAL}$    | Mutual Capacitance   | $(V_P-V_N) = 3.3$ V  |            | 0.13                   |              | pF   |
| $V_{ESD}$       | ESD Protection<br>Peak Discharge Voltage at any channel input,<br>in system, contact discharge<br>per IEC 61000-4-2 standard | $T_A = 25^\circ\text{C}$<br>(Notes 2 and 3)                    | ±15        |                        |              | kV   |
| $V_{CL}$        | Channel Clamp Voltage<br>Positive Transients<br>Negative Transients  | $I_{PP} = 1$ A, $t_P = 8/20$ μS;<br>$T_A = 25^\circ\text{C}$ ; |            | $V_P+1.5$<br>$V_N-1.5$ |              | V    |
| $R_{DYN}$       | Dynamic Resistance<br>Positive transients<br>Negative transients   | $I_{PP} = 1$ A, $t_P = 8/20$ μS;<br>$T_A = 25^\circ\text{C}$ ; |            | 0.4<br>0.4             |              | Ω    |

- All parameters specified at  $T_A = -40^\circ\text{C}$  to  $+85^\circ\text{C}$  unless otherwise noted.
- Standard IEC 61000-4-2 with  $C_{Discharge} = 150$  pF,  $R_{Discharge} = 330$  Ω,  $V_P = 3.3$  V,  $V_N$  grounded.
- From I/O pins to  $V_P$  or  $V_N$  only.  $V_P$  bypassed to  $V_N$  with low ESR 0.2 μF ceramic capacitor.

PERFORMANCE INFORMATION

Input Channel Capacitance Performance Curves

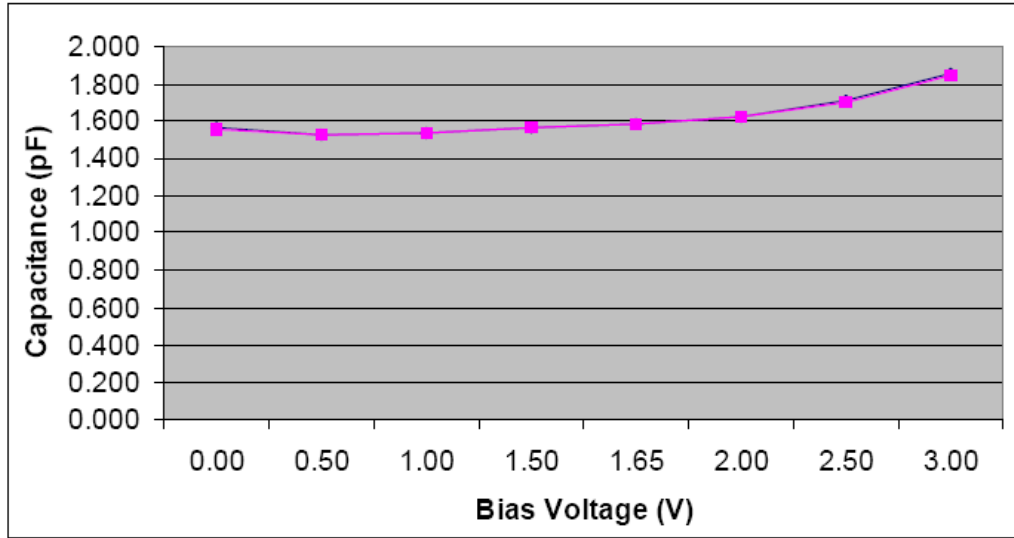


Figure 1. Typical Variation of  $C_{IN}$  vs.  $V_{IN}$   
 (f = 1 MHz,  $V_P$  = 3.3 V,  $V_N$  = 0 V, 0.1  $\mu$ F Chip Capacitor between  $V_P$  and  $V_N$ ,  $T_A$  = 25°C)

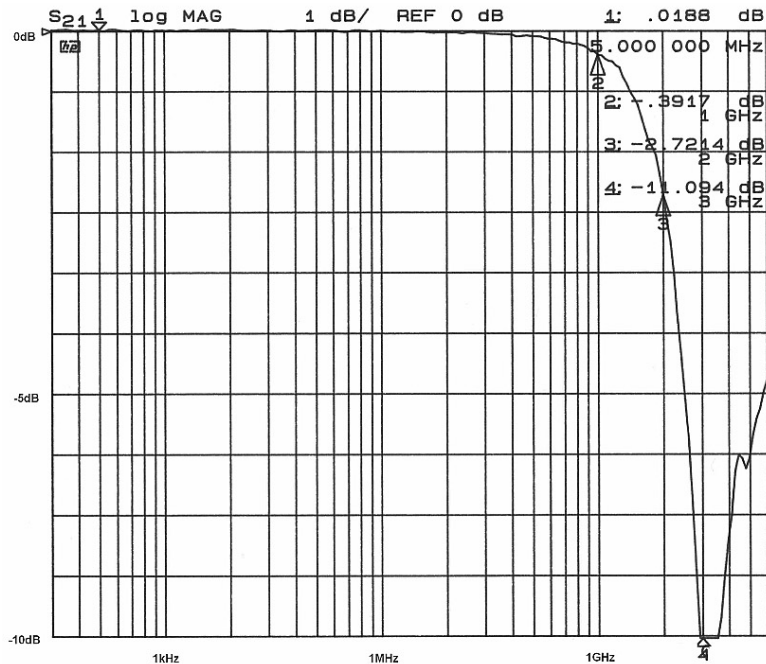


Figure 2. Typical Filter Performance (Nominal Conditions unless Specified Otherwise, 50 Ohm Environment)

APPLICATION INFORMATION

**Design Considerations**

In order to realize the maximum protection against ESD pulses, care must be taken in the PCB layout to minimize parasitic series inductances on the Supply/ Ground rails as well as the signal trace segment between the signal input (typically a connector) and the ESD protection device. Refer to Figure 1, which illustrates an example of a positive ESD pulse striking an input channel. The parasitic series inductance back to the power supply is represented by L1 and L2. The voltage VCL on the line being protected is:

$$V_{CL} = \text{Fwd voltage drop of } D_1 + V_{SUPPLY} + L_1 \times d(I_{ESD}) / dt + L_2 \times d(I_{ESD}) / dt$$

where IESD is the ESD current pulse, and VSUPPLY is the positive supply voltage.

An ESD current pulse can rise from zero to its peak value in a very short time. As an example, a level 4 contact discharge per the IEC61000-4-2 standard results in a current pulse that rises from zero to 30 Amps in 1ns. Here d(IESD)/dt can be approximated by d(ESD)/dt, or 30/(1x10-9). So just 10 nH of series inductance (L1 and L2 combined) will lead to a 300 V increment in VCL!

Similarly for negative ESD pulses, parasitic series inductance from the VN pin to the ground rail will lead to drastically increased negative voltage on the line being protected.

As a general rule, the ESD Protection Array should be located as close as possible to the point of entry of expected electrostatic discharges. The power supply bypass capacitor mentioned above should be as close to the VP pin of the Protection Array as possible, with minimum PCB trace lengths to the power supply, ground planes and between the signal input and the ESD device to minimize stray series inductance.

**Additional Information**

See also ON Semiconductor Application Note, “Design Considerations for ESD Protection”, in the Applications section.

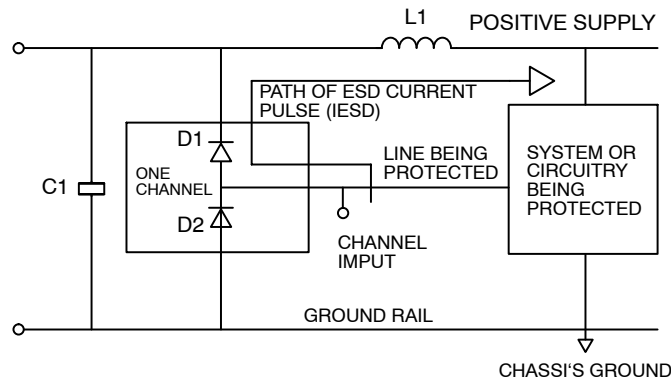
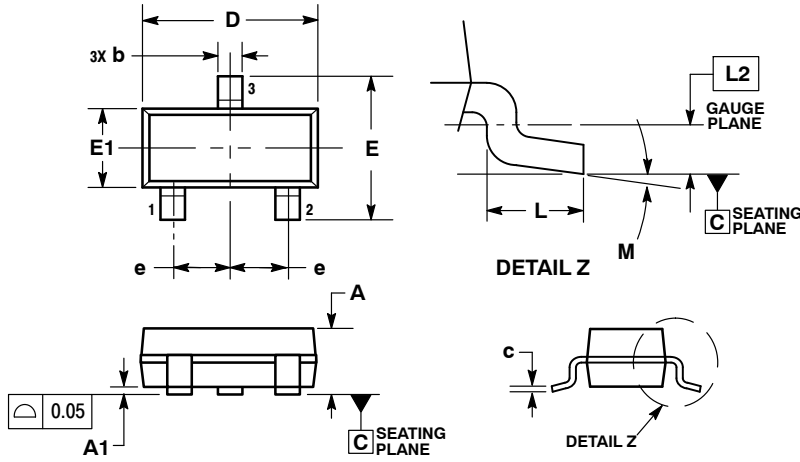


Figure 3. Application of Positive ESD Pulse between Input Channel and Ground

# CM1215

## PACKAGE DIMENSIONS

SOT-23 3-Lead (TO-236AA)  
CASE 419AH-01  
ISSUE O

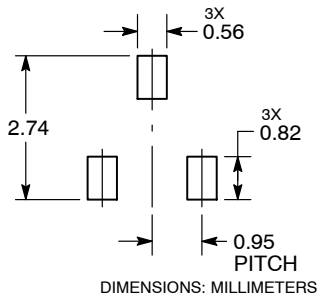


NOTES:

1. DIMENSIONING AND TOLERANCING PER ASME Y14.5M, 1994.
2. CONTROLLING DIMENSION: MILLIMETERS
3. MAXIMUM LEAD THICKNESS INCLUDES LEAD FINISH THICKNESS. MINIMUM LEAD THICKNESS IS THE MINIMUM THICKNESS OF BASE MATERIAL.
4. DIMENSIONS D AND E1 DO NOT INCLUDE MOLD FLASH, PROTRUSIONS, OR GATE BURRS. MOLD FLASH, PROTRUSIONS, OR GATE BURRS SHALL NOT EXCEED 0.15 PER SIDE. DIMENSIONS D AND E1 ARE DETERMINED AT DATUM H.
5. PIN ONE INDICATOR MUST BE LOCATED IN THE INDICATED ZONE.

| DIM | MILLIMETERS |      |
|-----|-------------|------|
|     | MIN         | MAX  |
| A   | 0.75        | 1.17 |
| A1  | 0.05        | 0.15 |
| b   | 0.30        | 0.50 |
| c   | 0.08        | 0.20 |
| D   | 2.80        | 3.05 |
| E   | 2.10        | 2.64 |
| E1  | 1.20        | 1.40 |
| e   | 0.95 BSC    |      |
| L   | 0.40        | 0.60 |
| L2  | 0.25 BSC    |      |
| M   | 0°          | 8°   |

### RECOMMENDED SOLDERING FOOTPRINT\*

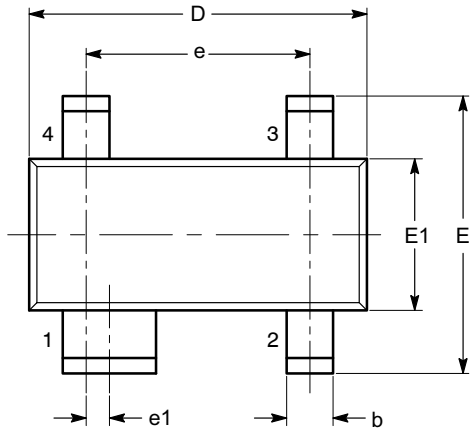


\*For additional information on our Pb-Free strategy and soldering details, please download the ON Semiconductor Soldering and Mounting Techniques Reference Manual, SOLDERRM/D.

# CM1215

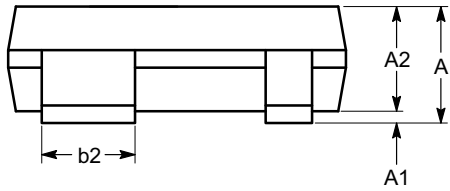
## PACKAGE DIMENSIONS

SOT-143, 4 Lead  
CASE 527AF-01  
ISSUE A

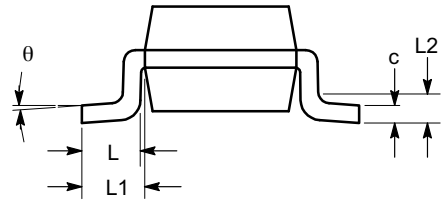


TOP VIEW

| SYMBOL   | MIN      | NOM  | MAX  |
|----------|----------|------|------|
| A        | 0.80     |      | 1.22 |
| A1       | 0.05     |      | 0.15 |
| A2       | 0.75     | 0.90 | 1.07 |
| b        | 0.30     |      | 0.50 |
| b2       | 0.76     |      | 0.89 |
| c        | 0.08     |      | 0.20 |
| D        | 2.80     | 2.90 | 3.04 |
| E        | 2.10     |      | 2.64 |
| E1       | 1.20     | 1.30 | 1.40 |
| e        | 1.92 BSC |      |      |
| e1       | 0.20 BSC |      |      |
| L        | 0.40     | 0.50 | 0.60 |
| L1       | 0.54 REF |      |      |
| L2       |          | 0.25 |      |
| $\theta$ | 0°       |      | 8°   |



SIDE VIEW



END VIEW

**Notes:**

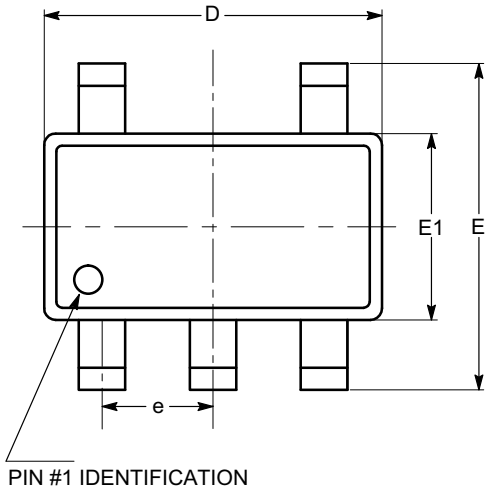
- (1) All dimensions are in millimeters. Angles in degrees.
- (2) Complies with JEDEC TO-253.



# CM1215

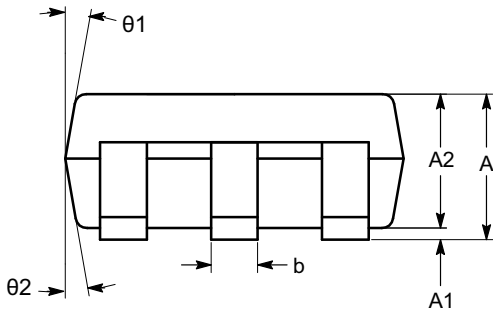
## PACKAGE DIMENSIONS

SOT-23, 5 Lead  
CASE 527AH-01  
ISSUE O

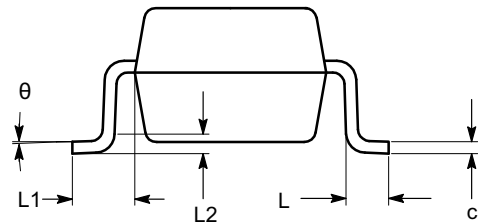


TOP VIEW

| SYMBOL     | MIN      | NOM  | MAX  |
|------------|----------|------|------|
| A          | 0.90     |      | 1.45 |
| A1         | 0.00     |      | 0.15 |
| A2         | 0.90     | 1.15 | 1.30 |
| b          | 0.30     |      | 0.50 |
| c          | 0.08     |      | 0.22 |
| D          | 2.90 BSC |      |      |
| E          | 2.80 BSC |      |      |
| E1         | 1.60 BSC |      |      |
| e          | 0.95 BSC |      |      |
| L          | 0.30     | 0.45 | 0.60 |
| L1         | 0.60 REF |      |      |
| L2         | 0.25 REF |      |      |
| $\theta$   | 0°       | 4°   | 8°   |
| $\theta 1$ | 5°       | 10°  | 15°  |
| $\theta 2$ | 5°       | 10°  | 15°  |



SIDE VIEW



END VIEW

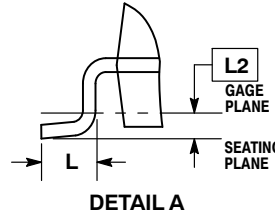
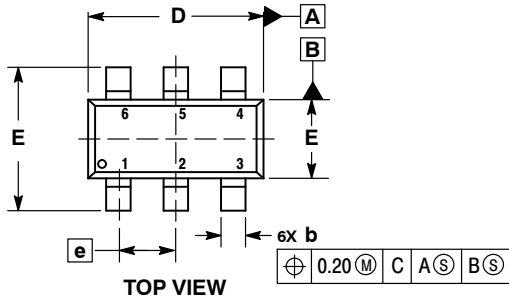
**Notes:**

- (1) All dimensions in millimeters. Angles in degrees.
- (2) Complies with JEDEC standard MO-178.

# CM1215

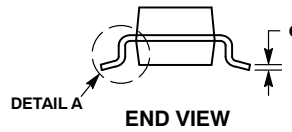
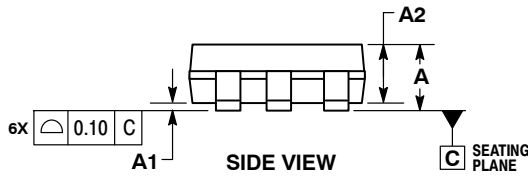
## PACKAGE DIMENSIONS

SOT-23, 6 Lead  
CASE 527AJ-01  
ISSUE A

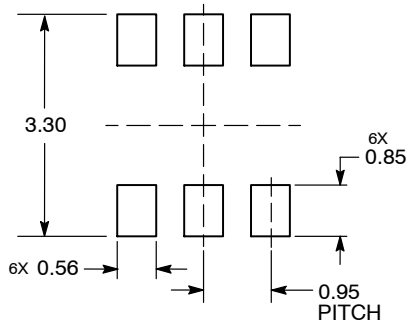


- NOTES:
1. DIMENSIONING AND TOLERANCING PER ASME Y14.5M, 1994.
  2. CONTROLLING DIMENSION: MILLIMETERS.
  3. DATUM C IS THE SEATING PLANE.

| MILLIMETERS |          |      |
|-------------|----------|------|
| DIM         | MIN      | MAX  |
| A           | ---      | 1.45 |
| A1          | 0.00     | 0.15 |
| A2          | 0.90     | 1.30 |
| b           | 0.20     | 0.50 |
| c           | 0.08     | 0.26 |
| D           | 2.70     | 3.00 |
| E           | 2.50     | 3.10 |
| E1          | 1.30     | 1.80 |
| e           | 0.95 BSC |      |
| L           | 0.20     | 0.60 |
| L2          | 0.25 BSC |      |



### RECOMMENDED SOLDERING FOOTPRINT\*



DIMENSIONS: MILLIMETERS

\*For additional information on our Pb-Free strategy and soldering details, please download the ON Semiconductor Soldering and Mounting Techniques Reference Manual, SOLDERRM/D.

FireWire is a registered trademark of Apple Computer, Inc.  
iLink is a trademark of S. J. Electro Systems, Inc.

ON Semiconductor and are registered trademarks of Semiconductor Components Industries, LLC (SCILLC). SCILLC reserves the right to make changes without further notice to any products herein. SCILLC makes no warranty, representation or guarantee regarding the suitability of its products for any particular purpose, nor does SCILLC assume any liability arising out of the application or use of any product or circuit, and specifically disclaims any and all liability, including without limitation special, consequential or incidental damages. "Typical" parameters which may be provided in SCILLC data sheets and/or specifications can and do vary in different applications and actual performance may vary over time. All operating parameters, including "Typicals" must be validated for each customer application by customer's technical experts. SCILLC does not convey any license under its patent rights nor the rights of others. SCILLC products are not designed, intended, or authorized for use as components in systems intended for surgical implant into the body, or other applications intended to support or sustain life, or for any other application in which the failure of the SCILLC product could create a situation where personal injury or death may occur. Should Buyer purchase or use SCILLC products for any such unintended or unauthorized application, Buyer shall indemnify and hold SCILLC and its officers, employees, subsidiaries, affiliates, and distributors harmless against all claims, costs, damages, and expenses, and reasonable attorney fees arising out of, directly or indirectly, any claim of personal injury or death associated with such unintended or unauthorized use, even if such claim alleges that SCILLC was negligent regarding the design or manufacture of the part. SCILLC is an Equal Opportunity/Affirmative Action Employer. This literature is subject to all applicable copyright laws and is not for resale in any manner.

### PUBLICATION ORDERING INFORMATION

**LITERATURE FULFILLMENT:**  
Literature Distribution Center for ON Semiconductor  
P.O. Box 5163, Denver, Colorado 80217 USA  
**Phone:** 303-675-2175 or 800-344-3860 Toll Free USA/Canada  
**Fax:** 303-675-2176 or 800-344-3867 Toll Free USA/Canada  
**Email:** orderlit@onsemi.com

**N. American Technical Support:** 800-282-9855 Toll Free  
USA/Canada  
**Europe, Middle East and Africa Technical Support:**  
Phone: 421 33 790 2910  
**Japan Customer Focus Center**  
Phone: 81-3-5773-3850

**ON Semiconductor Website:** [www.onsemi.com](http://www.onsemi.com)  
**Order Literature:** <http://www.onsemi.com/orderlit>  
For additional information, please contact your local Sales Representative