

PLEASE CHECK WWW.MOLEX.COM FOR LATEST PART INFORMATION

Part Number: **5034896010**
Status: **Active**
Overview: SlimStack™ 0.40mm Pitch Board-to-Board Connectors
Description: 0.40mm Pitch SlimStack™ Board-to-Board Receptacle, Surface Mount, Dual Row, Vertical, 1.00mm Stacking Height, 60 Circuits

Documents:

[3D Model](#) [Product Specification PS-503489-001-001 \(PDF\)](#)
[Drawing \(PDF\)](#) [RoHS Certificate of Compliance \(PDF\)](#)

General

Product Family PCB Receptacles
Series 503489
Application Board-to-Board, Signal
Overview SlimStack™ 0.40mm Pitch Board-to-Board Connectors
Product Name SlimStack™
UPC 884982371361

Physical

Circuits (Loaded) 60
Circuits (maximum) 60
Color - Resin Black
Durability (mating cycles max) 30
Glow-Wire Compliant No
Lock to Mating Part Yes
Mated Height 1.00mm
Material - Metal Copper Alloy
Material - Plating Mating Gold
Material - Plating Termination Gold
Net Weight 43.396/mg
Number of Rows 2
Orientation Vertical
PCB Locator No
PCB Retention Yes
Packaging Type Embossed Tape on Reel
Pitch - Mating Interface 0.40mm
Polarized to Mating Part No
Polarized to PCB No
Stackable No
Temperature Range - Operating -20°C to +85°C
Termination Interface: Style Surface Mount

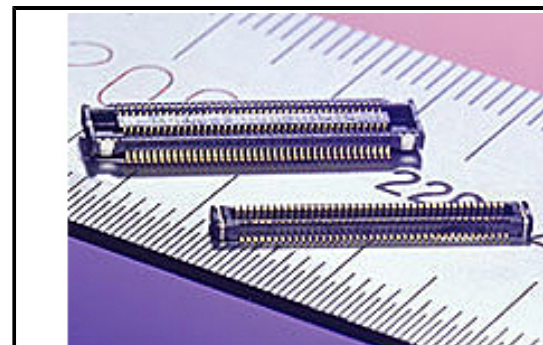
Electrical

Current - Maximum per Contact 0.3A
Voltage - Maximum 50V AC/DC

Material Info

Reference - Drawing Numbers

Product Specification PS-503489-001-001
Sales Drawing SD-503489-001, SD-503489-002



Series image - Reference only

EU ELV

Not Relevant

EU RoHS

Compliant

REACH SVHC

Not Contained Per -
ED/21/2016 (20 June
2016)

Halogen-Free

Status

Low-Halogen

**Need more information on product
environmental compliance?**

Email productcompliance@molex.com
Please visit the [Contact Us](#) section for any
non-product compliance questions.

China ROHS	Green Image
ELV	Not Relevant
RoHS Phthalates	Not Contained

Search Parts in this Series

[503489](#) Series

Mates With

[503308](#) PCB Header